



Hydraulic Electromagnet

2025

PRODUCT OVERVIEW..... 01
SPECIFICATIONS & FEATURES..... 03



*Pictured model: 25-30T Hydraulic Electromagnet

Hydraulic Electromagnet

AVAILABLE FOR 13.5T-50T

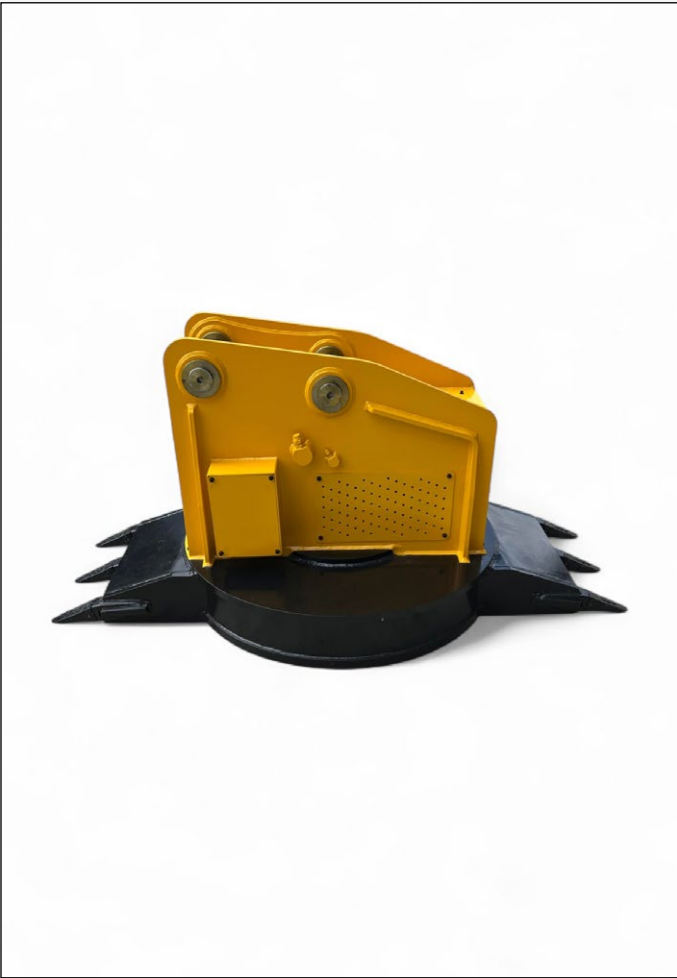
Transform your Recycling & Waste-management projects with our Hydraulic Electromagnet. Also known as Hydraulic Lifting Magnet, Hydraulic Scrap Magnet and Electro-Hydraulic Magnet

Features include: easy attachment mounting, hydraulic control, surface scraper, case drain, customisable head bracket, manifold blocks, a shut-off pedal for quick control and a pre-calibrated voltage for efficient operation.

The Hydraulic Electromagnet is built with a mild 400 body with 350 custom hitch for high-strength and durability. Stringent on-site testing and quality assurance has been conducted on our updated models to ensure optimal attachment longevity and reliability

The hydraulic hoses also come wrapped in an anti-abrasion coil wrap for flexibility and durability.

All Aussie Buckets Hydraulic Electromagnets are tested and certified in Australia by a licensed electrician, and come backed by our industry-leading 5-year warranty.




Specifications

Tonnage (t)	Weight (kg)	Diameter (mm)	Height (mm)	Flow Rate (L/min)	Pressure (Bar)
13.5 - 20	1300	800	950	100 - 140	180
20 - 30	1700	1000	1050	120 - 160	210
26 - 35	2200	1200	1090	140 - 180	220
32 - 50	2650	1300	1150	160 - 200	250

Tonnage (t)	Power Consumption (kW)	Lifting Capacity Solid (kg)	Lifting Capacity Scrap (kg)	Lifting Capacity Wire (kg)
13.5 - 20	3.9	3000	250 - 480	150 - 300
20 - 30	7	5500	500 - 700	300 - 400
26 - 35	10	7500	1000 - 1300	500 - 600
32 - 50	11.9	7700	1000 - 1400	600 - 700

Features



Easy Mounting

Connects with just 2 hoses, a case drain line and an optional electrical line. This simplified mounting system reduces the number of required connections allowing for quick, user-friendly and versatile installation. This gets you up and running sooner, saving time and money.

Hydraulic Control

The hydraulic motor powers an in-built generator, activating the magnet. This harnessing of the excavator's hydraulic motor allows consistent and reliable power to the magnet, which in turn allows it to lift a wider range of materials more efficiently.

Surface Scraper

Enables multiple passes without the use of additional machinery, with replaceable teeth for longevity. The surface scraper facilitates efficient material handling by assisting in separating materials such as concrete and metal bars.

AUSSIE BUCKETS

For complete information on Aussie Buckets products and industry solutions, visit our website:

www.aussiebuckets.com.au

The photos in this catalog display various tonnages and are for illustrative purposes only. To confirm specific wear and design elements, please discuss your requirements with a member of our team. Final designs and wear elements may vary by tonnage. All product specifications were accurate at the time of publishing; however, these may differ from current specifications. For the latest details, please consult with an attachment specialist.

The words "Aussie Buckets" and the associated logo are registered trademarks within Australia.

© 2025 AUSSIE BUCKETS PTY LTD